

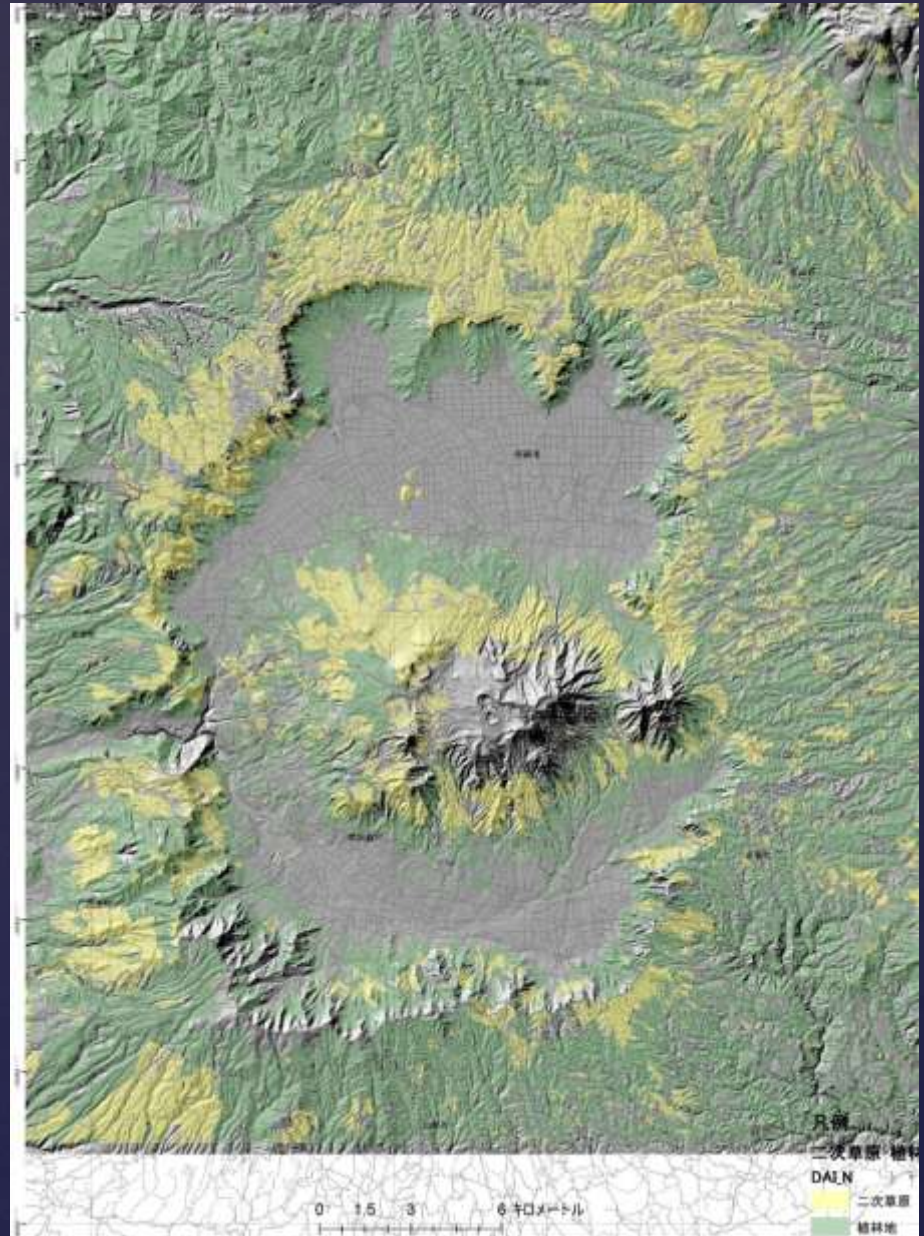
Conservation of Culturally Valuable Grassland Landscapes in the Aso Kuju National Park in Cooperation with Diverse Related Bodies

Reiko MACHIDA

The Department of Regional Environmental Science,
Tokyo University of Agriculture
Research Associate



Overview of Aso Kuju National Park





- The designation of national parks in Japan started in 1929.
- Aso Kuju National Park was designated as a national park in 1934.
- The fourth largest number of visitor among 29 national parks in Japan.

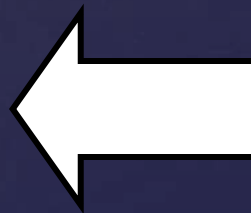
Traditional Cycle of Grassland Management



Pasturage
(May-August)



Controlled Burning
(March)



Fire Belt Mowing
(October)



Intrusion of
timber forests



Heavy Bushes

Recently, the grasslands are being neglected.



Namino (Waving Field) in 1934
(Photo: "National Park" Vol.2)

- Problem -

How has the change in agricultural economy influenced the national parks landscape?



Research Subjects

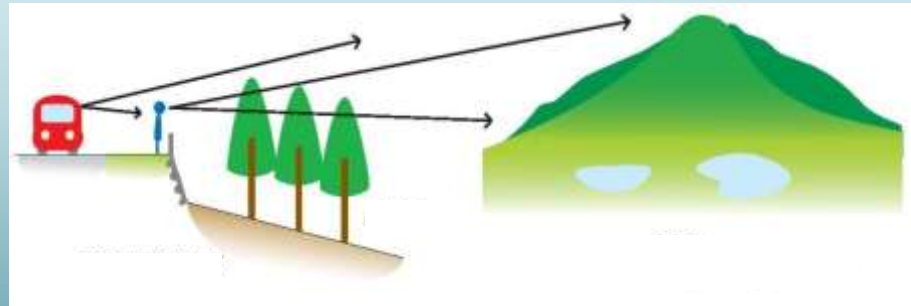
1. The Cultural Value of Grasslands



2. Solution for Sustainable Grassland Management

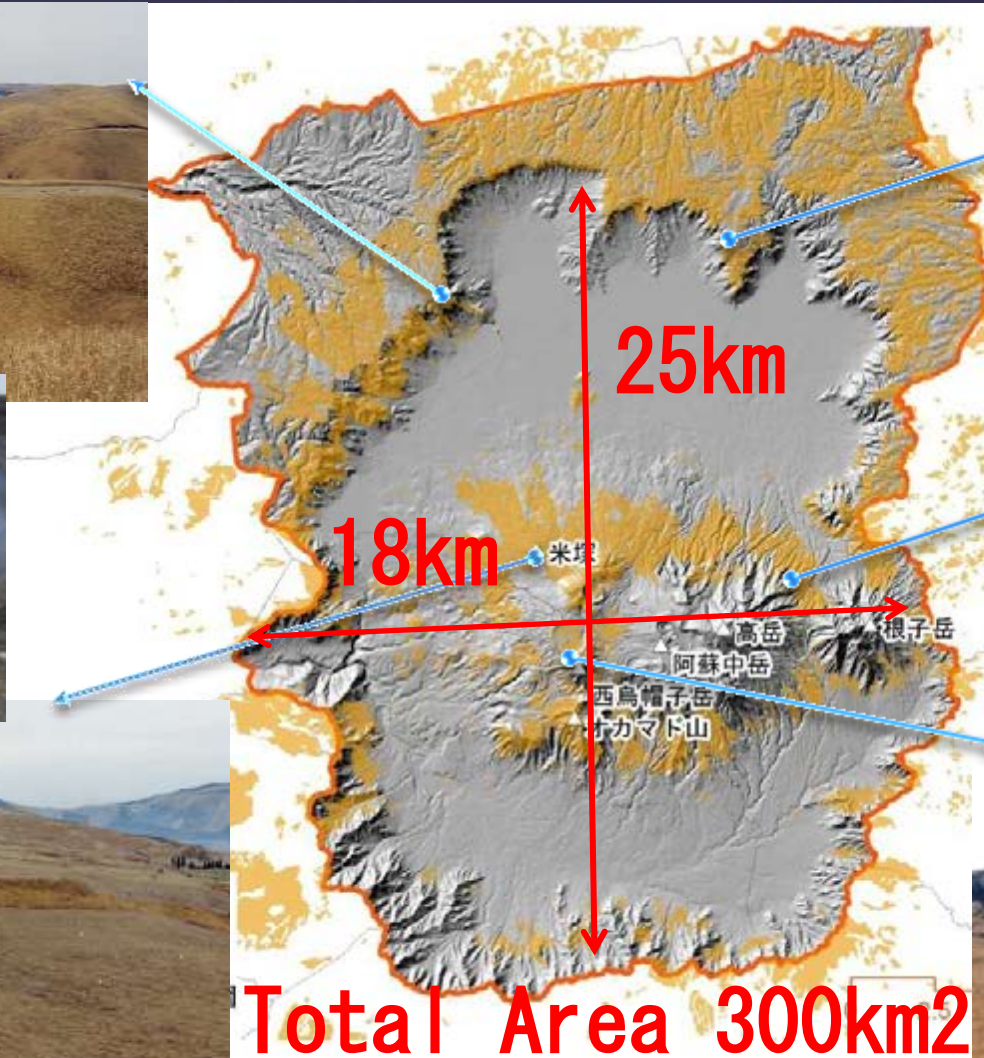
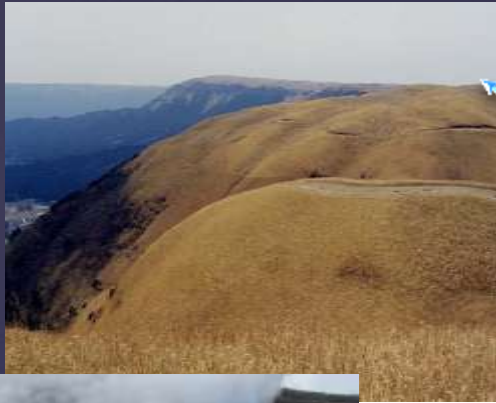


3. Vision for the Landscape Management in Aso



The Cultural Value of Grasslands

A Variety of Unique Landforms Created by Volcanic Activities



Total Area 300km²

The Cultural Value of Grasslands

Rice Hill (Kome-zuka)



The Cultural Value of Grasslands



Reference: NPO The Aso Green-stock

Local Customs and Wild Flowers



Polemonium
kiushianum



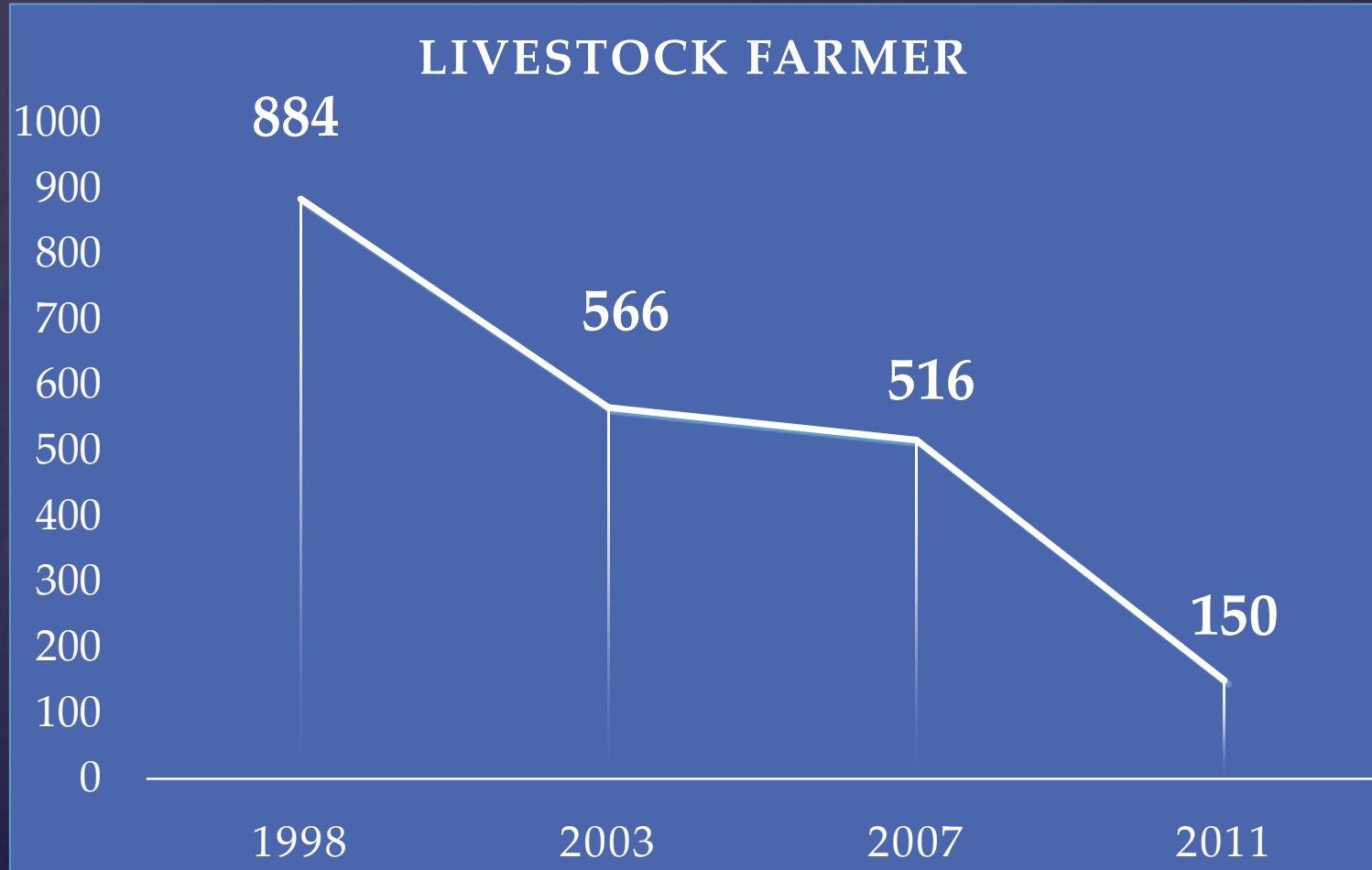
Lychnis
sieboldii



Echinops
setifer Iljin

Solution for Sustainable Grassland Management

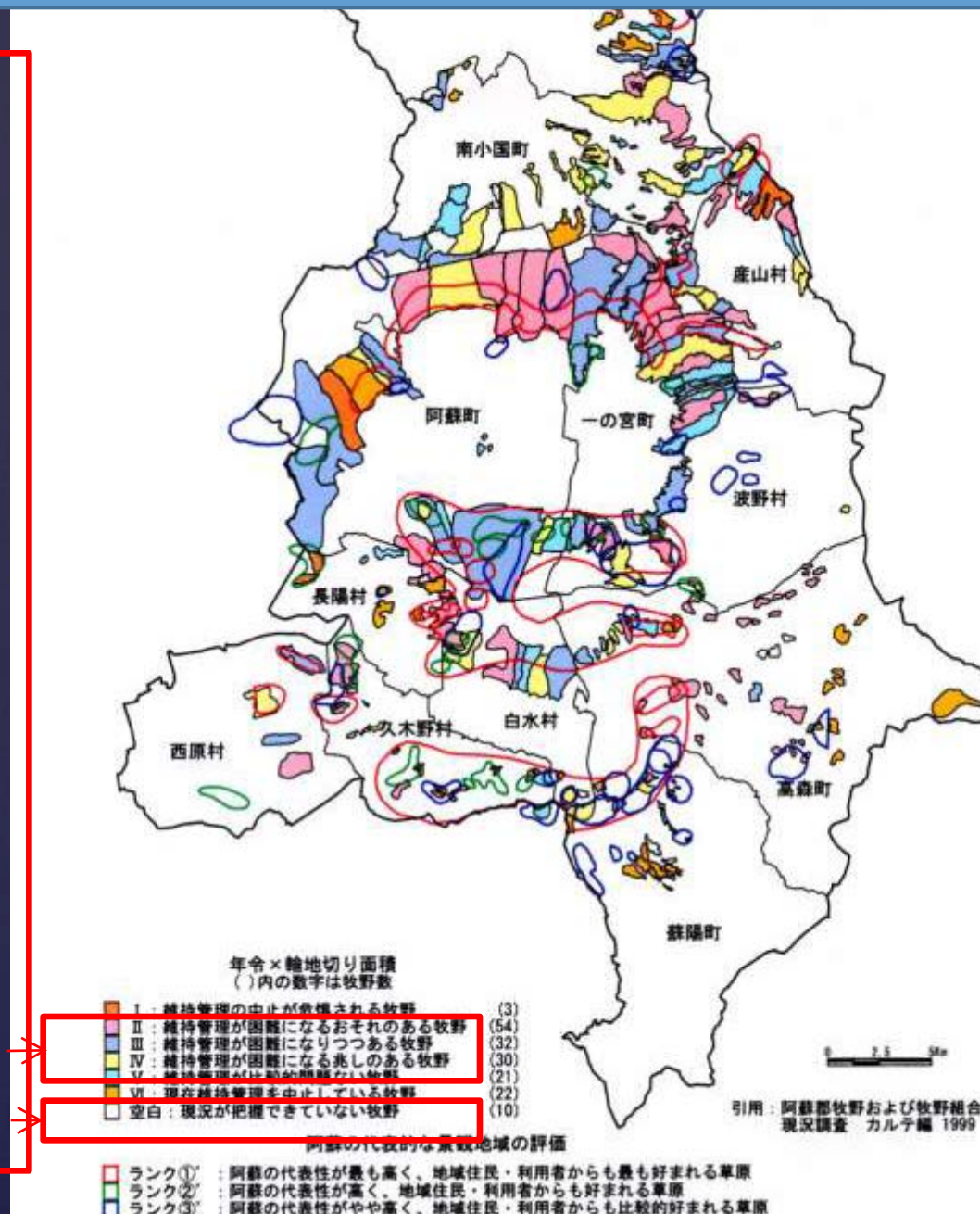
Decreasing Population of Local Livestock Farmers



Solution for Sustainable Grassland Management

Areas with Difficult Situation for Sustainable Maintenance

- The fears for the discontinuation to maintenance(3)
- The fears for the difficulties of maintenance(54)
- The difficulties of maintenance (32)
- The indication of difficulties of maintenance (30)
- The discontinuation of maintenance (22)
- Unknown(10)



Solution for Sustainable Grassland Management



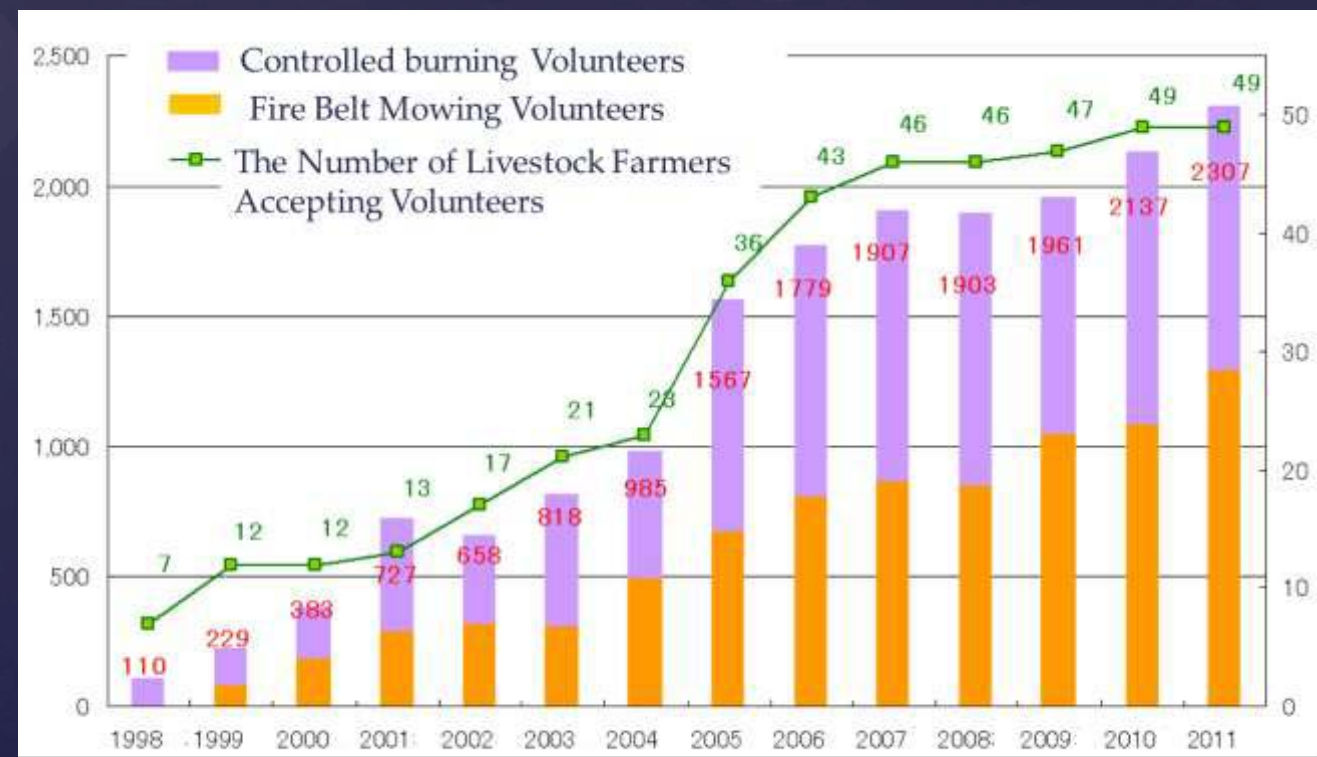
Public Involvement in the Management

Solution for Sustainable Grassland Management

Aso Green Stock

1991 Article “Crises of Grasslands” on Kumamoto Nichinichi News Paper - Public Attention on the grasslands of Aso increased

1995 Foundation of “Aso Green Stock”



Reference: NPO The Aso Green-stock

Solution for Sustainable Grassland Management

Motivations of Grassland Management for Volunteers

Urban Volunteers

**Appreciation of the
Beauty of Grassland
Landscapes**

Local People

**Rediscovery of
the Value of
Grasslands**

The Landscape Protection Agreement (2003)

- There are more neglected natural environment areas, just like Livestock change
- The Ministry of Environment revised the Natural park Act. (1st April, 2003)



Establishment of Landscape Protection Agreements



Landscape Protection Agreements

Merit for
Volunteers

- Securing Fields for Activities

Merit for
Local People

- Special Tax Breaks
- Secure Manpower for Management Work



Law for the Promotion of Nature Restoration (2002)

Basic Direction for the
Implementation of
Nature Restoration

Local Action

Local Government
N P O

Nature Conservation Committee
N P O • Local Government • Local People • Academic Experts

↓
Master Plan

Nature Restoration
Project

Solution for Sustainable Grassland Management

Conservation of Grasslands from Various Viewpoints



Agriculture



Tourism

**Cultural
Landscapes**

Education



Solution for Sustainable Grassland Management

Agricultural Products with Certification Mark



Reference : Aso Nature Conservation Committee

Solution for Sustainable Grassland Management

The Eco-tourism



Public Opening of
Private Farm
Lands for Walking

Solution for Sustainable Grassland Management

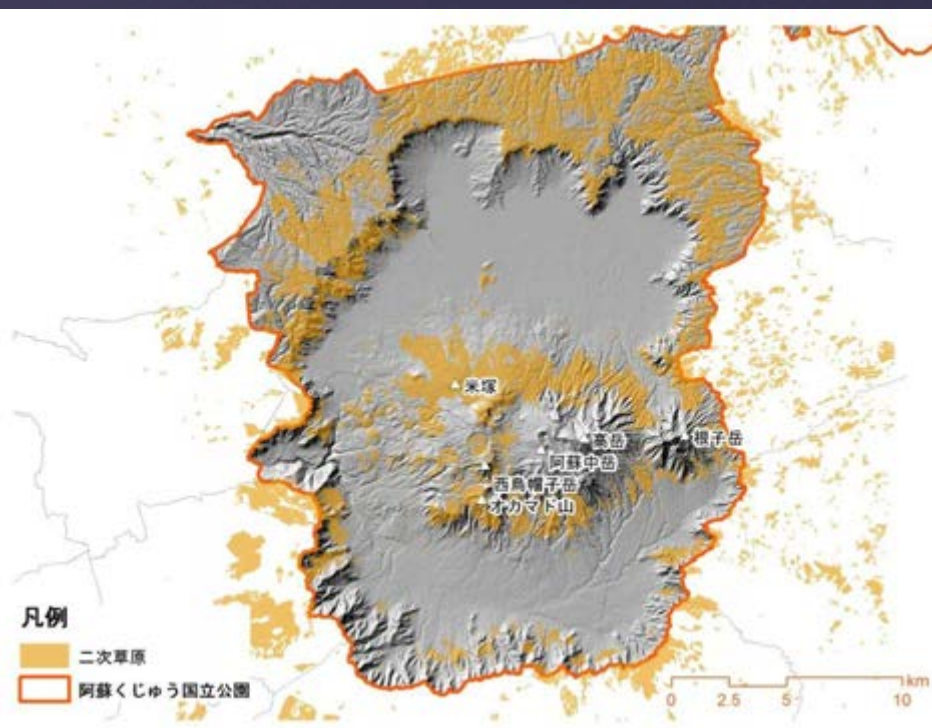


Education for Next Generation of Grasslands Management

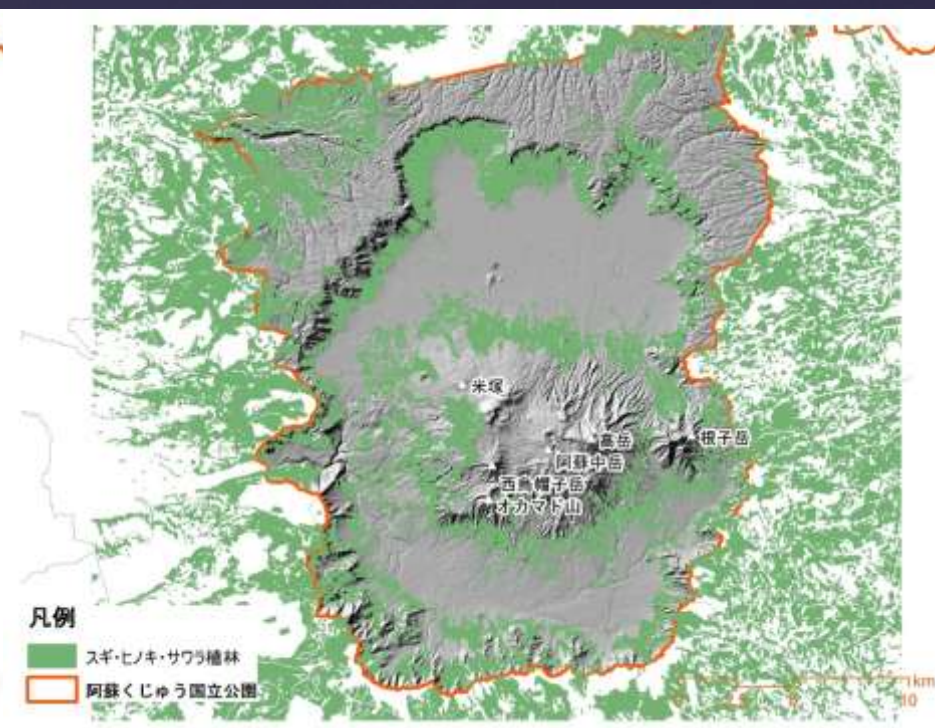


Vision for the Landscape Management in Aso

Land Use of Grasslands and Timber Forests

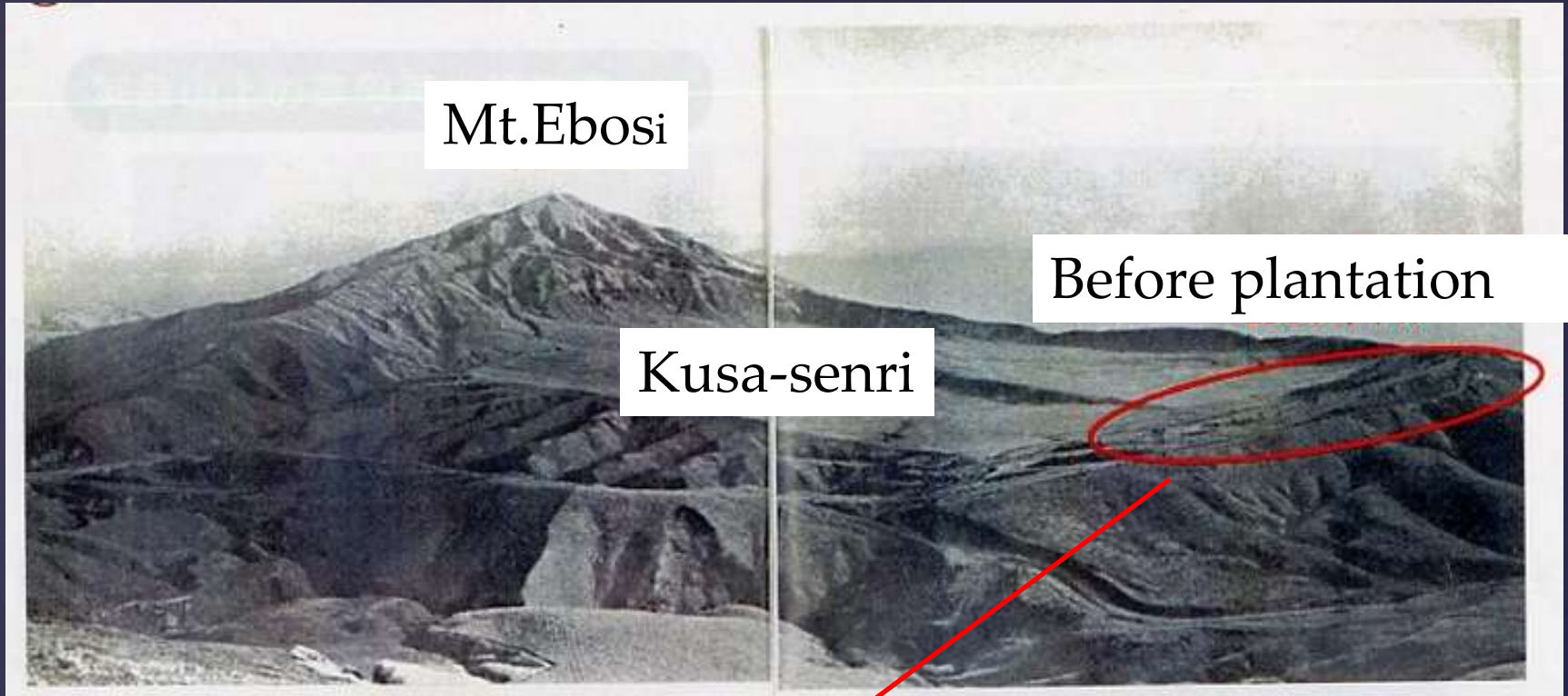


Grasslands
22,000 ha



Timber Forests
70,990 ha

The View of "Kusa-Senri" in 1950s

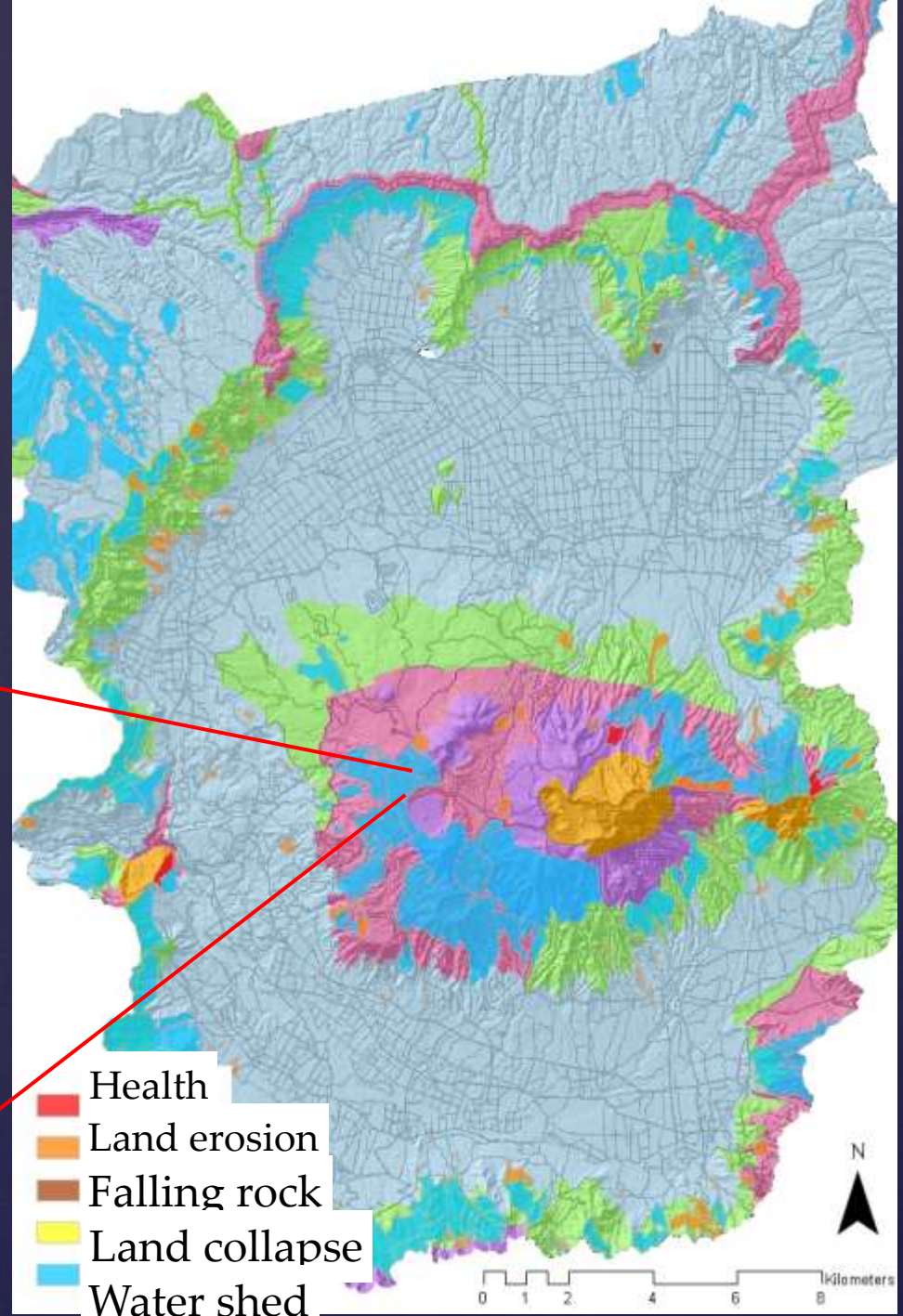




Land Erosion Cause at Neglected Timber Forest and Grasslands



16,960ha of Protection Forests



The Objective of Grassland Restoration(Forest Removal)

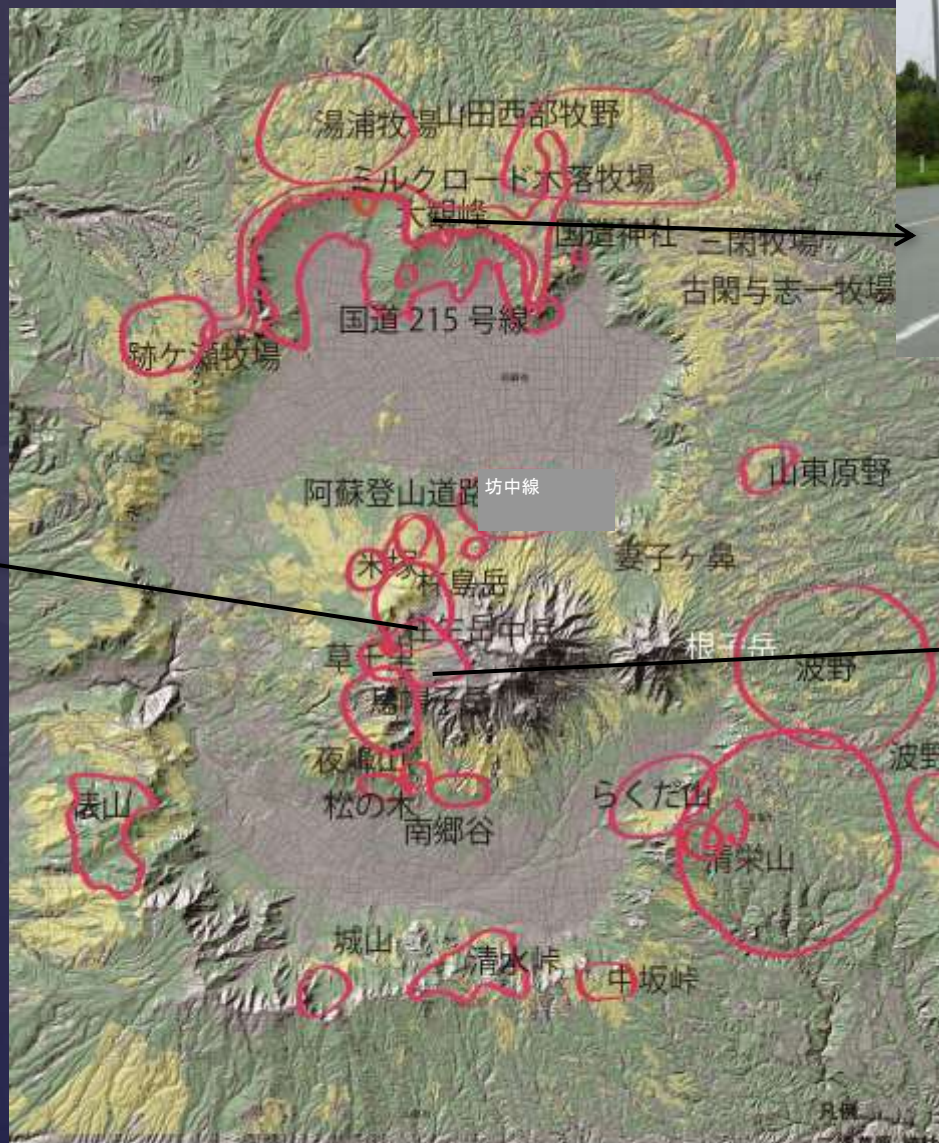
The Objective of Grassland Restoration (Forest Removal)

- Non Forest Reserved
- Economically Less Important Forest
- Forest Blocking the Fine View of Grasslands
- Forest Hindering Efficient Controlled Burning



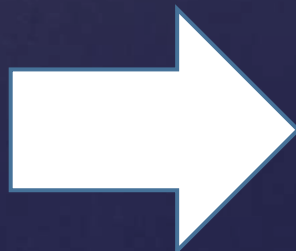
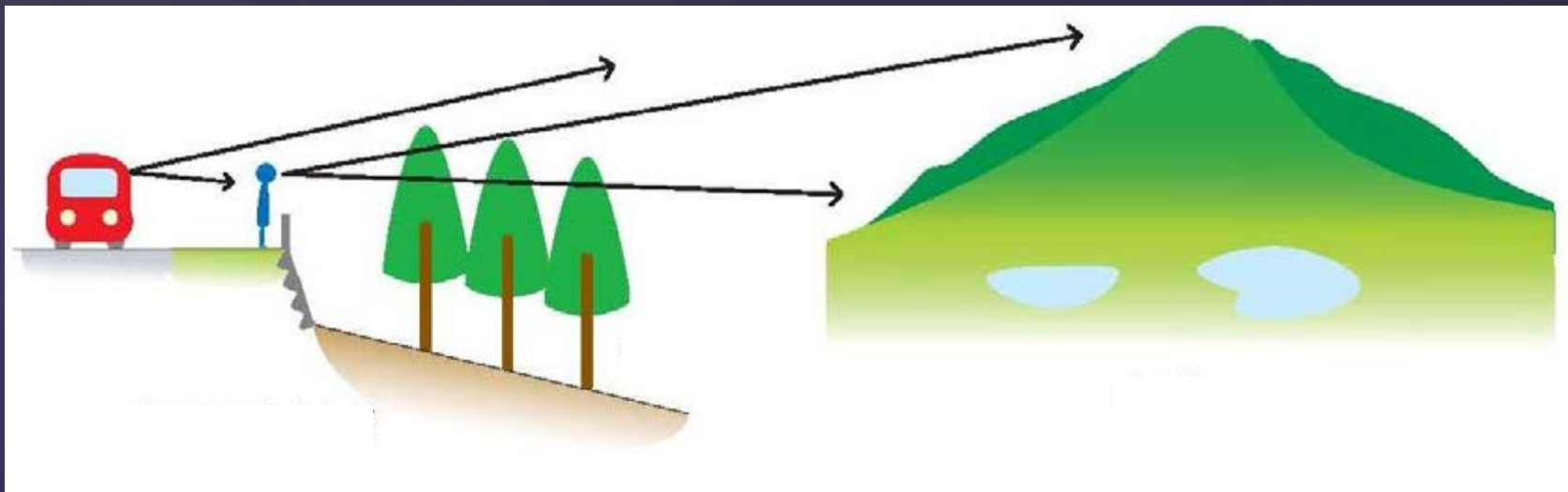
Vision for the Landscape Management in Aso

The Map of Important Areas to be Restored



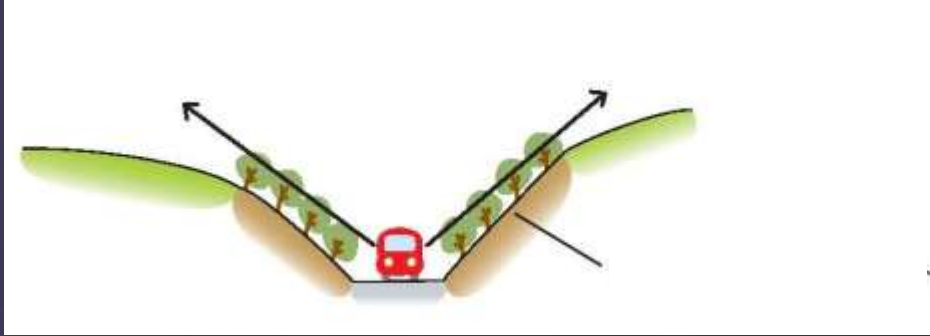
Vision for the Landscape Management in Aso

Case-① Conservation of Grasslands Observed from Major Viewpoints



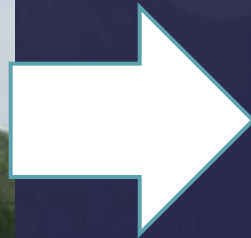
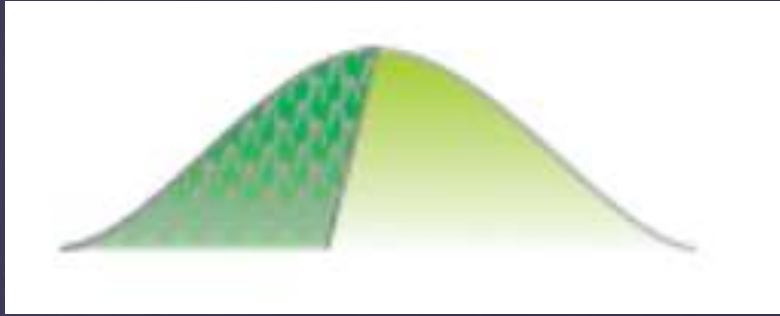
Vision for the Landscape Management in Aso

Case- ② Conservation of Grasslands Areas with Unique Ridge Lines



Vision for the Landscape Management in Aso

Case-③ Conservation of Smooth Hillside Grasslands



Vision for the Landscape Management in Aso

Conservation Management plan and Utilization
Promotion Plan

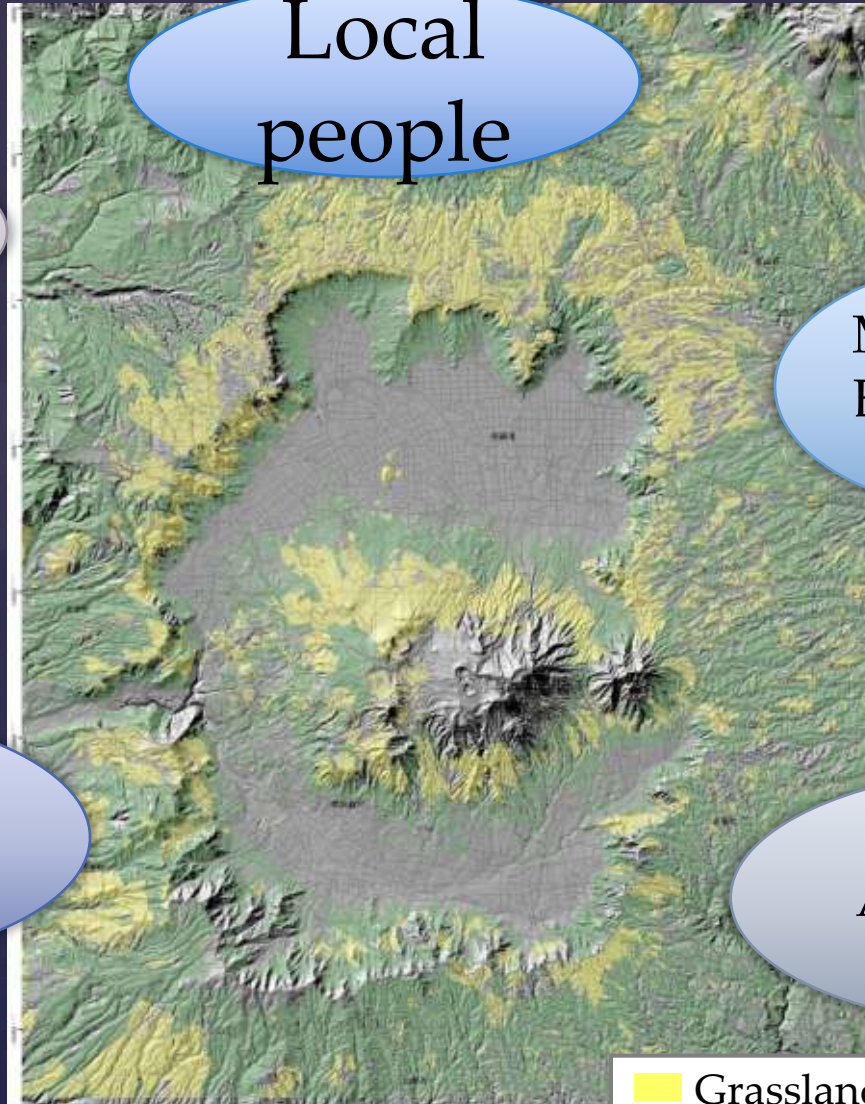
NGO

Local
people

Ministry of
Environment

Researcher

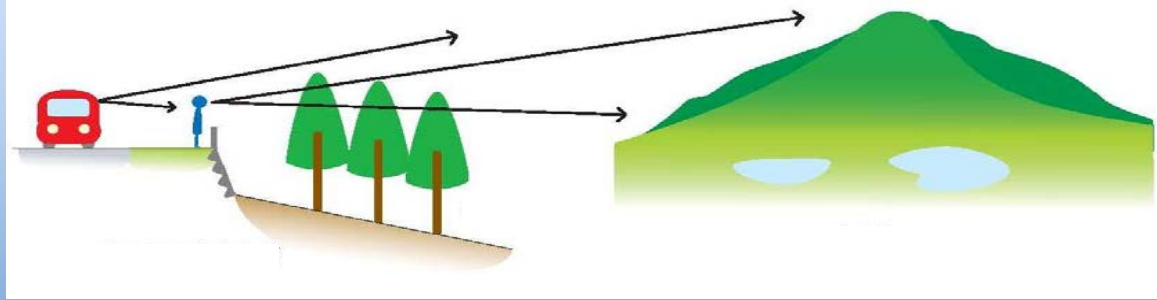
Administration



Grassland
Timber Forest

Vision for the Landscape Management in ASO

The Way to Treat Grassland and Woodland



The priority of grassland types for conservation

A clear vision for conservation of grassland

Approach to reach consensus.



Thank you very much for listening.